

# Truck and Trailer Cranes

Truck- and Trailer Cranes  
Inclined-, Furniture- and Scaffolding Lifts



**Böcker**  
MY WAY TO THE TOP

*It's always a good day  
for Böcker*





# TRUCK CRANES



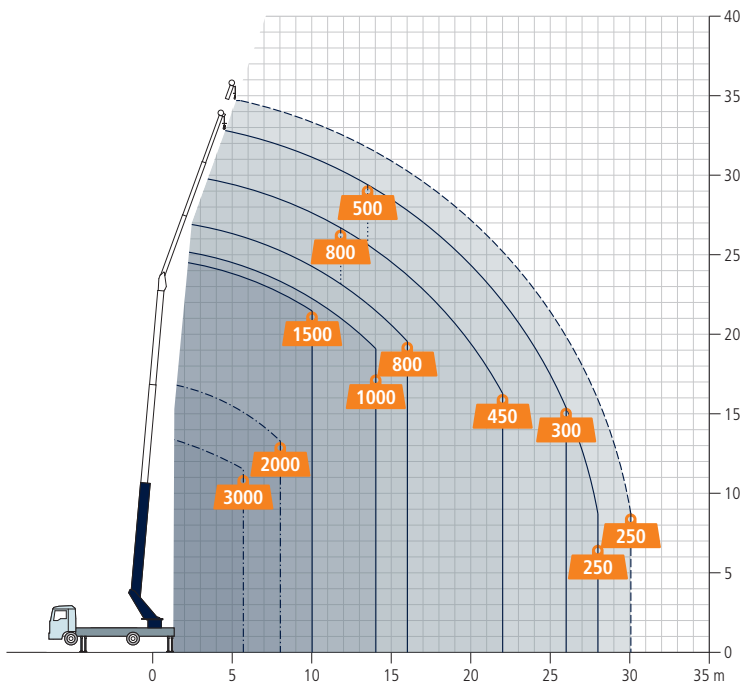
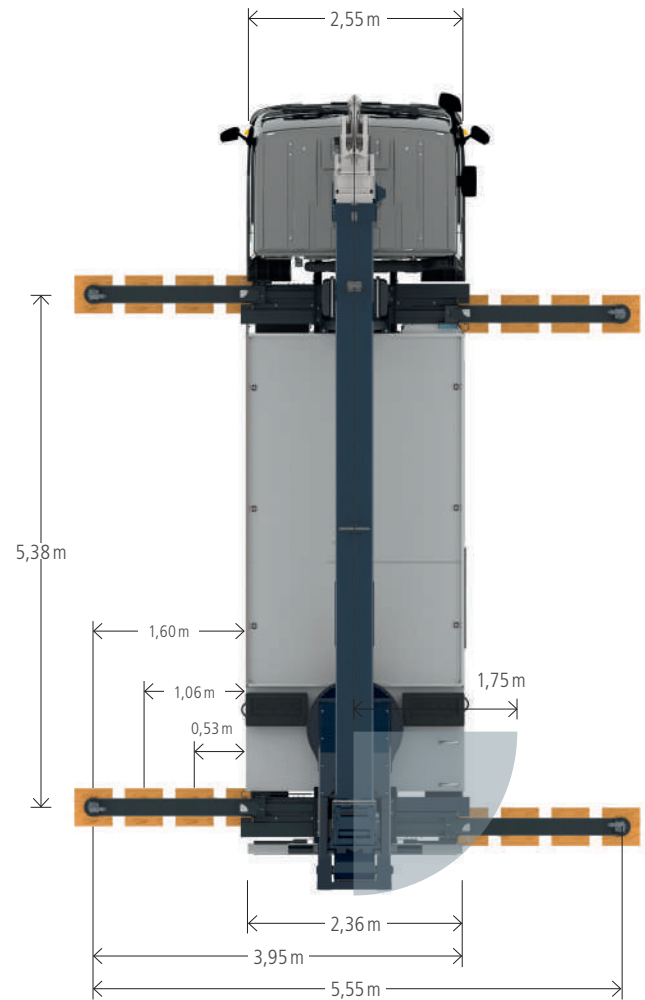
# AK 37

Technical Information



## Technical Data

Permissible gross vehicle weight [t]	7,49 / 8,6 (8,8)
Max. payload [kg]	1.500 (opt. 3.000)
Max. extension length [m]	35 (opt. 37)
Working height up to jib [m]	23,6
Jib extendable [m]	4,9 / 8,0 / 11,1 (opt. 13,1)
Jib payload [kg]	1.500 / 800 / 500 / (250)
Boom angle [degrees]	85
Jib angle [degrees]	162
Pivoting range [degrees]	+/- 315
Hook speed [m/min]	45
Range / Working height max. [m] with non-rotating basket 200 kg with rotating basket 250 kg (PK 250-D)	22,0 / 30,5 21,1 / 30,5
Drive	PTO / 400 V hybrid / 230 V hybrid with battery



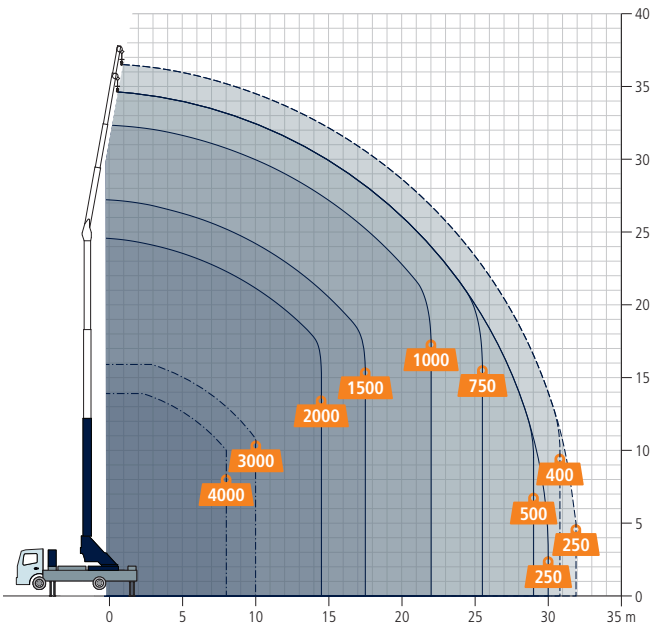
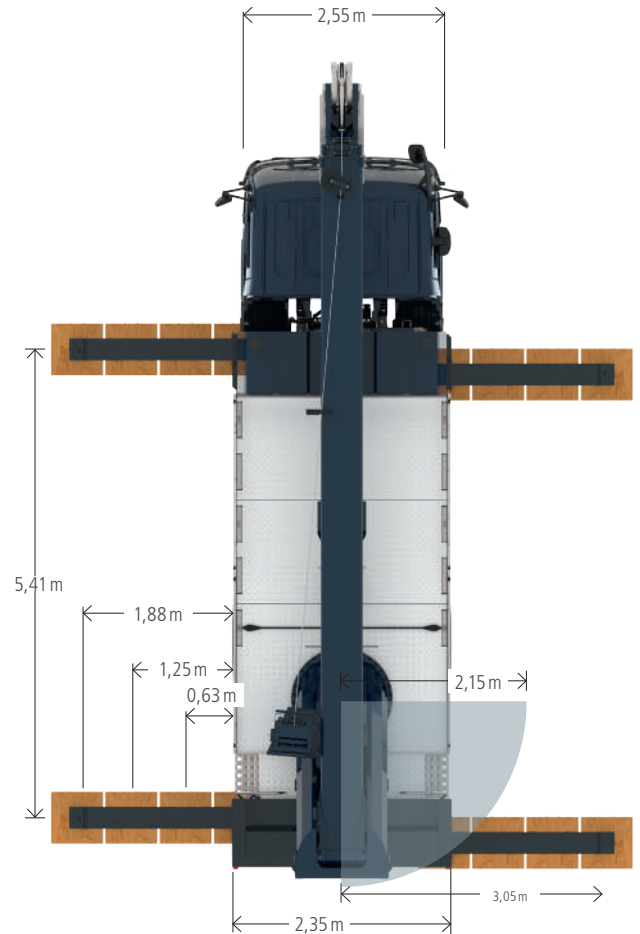
# AK 36

Technical Information



## Technical Data

Permissible gross vehicle weight [t]	>16
Max. payload [kg]	2.000 (opt. 4.000)
Max. extension length [m]	36 (opt. 37,9)
Max. extension length [m]	25,2
Jib extendable [m]	5,2 - 10,9 (opt. 12,8)
Jib payload [kg]	2.000 - 800 (400)
Boom angle [degrees]	90
Jib angle [degrees]	180
Pivoting range [degrees]	endless
Hook speed [m/min]	45
Range / Working height max. [m] with non-rotating basket 250 kg with rotating basket 300 kg (PK 300-D)	32,2 / 37,1 27,4 / 37,2
Drive	PTO / 400 V hybrid



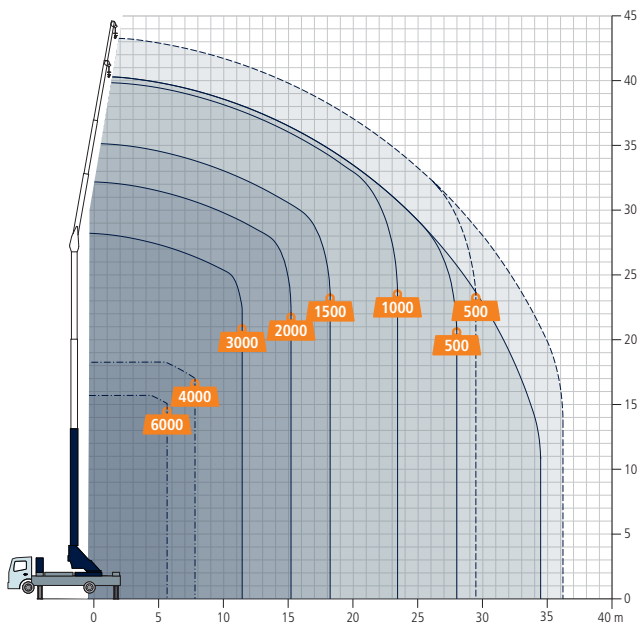
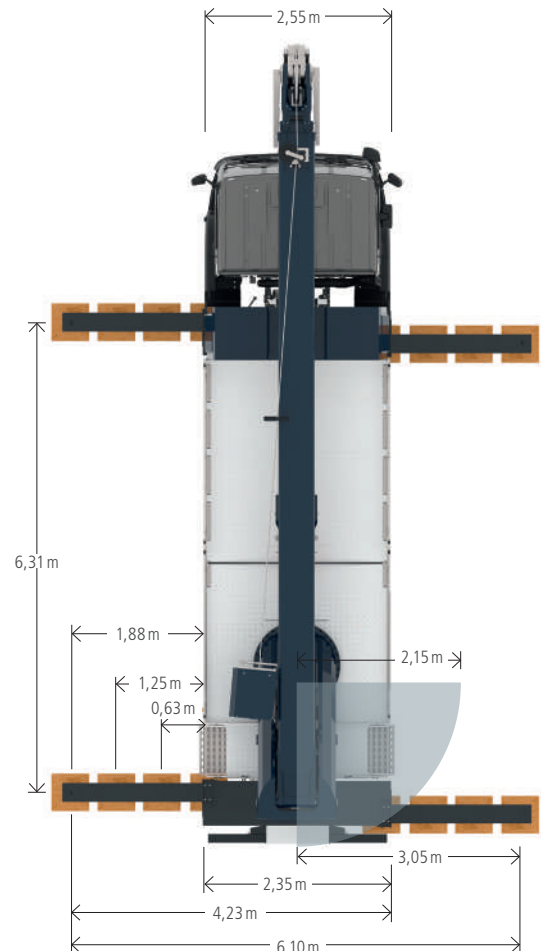
# AK 42

Technical Information



## Technical Data

Permissible gross vehicle weight [t]	18
Max. payload [kg]	3.000 (opt. 6.000)
Max. extension length [m]	41,9 (opt. 44,9)
Working height up to jib [m]	27,5
Jib extendable [m]	6,3 - 14,4 (opt. 17,4)
Jib payload [kg]	3.000 - 1.000 (500)
Boom angle [degrees]	90
Jib angle [degrees]	180
Pivoting range [degrees]	endless
Hook speed [m/min]	60
Range / Working height max. [m] with non-rotating basket 250 kg	29,7 / 42,8
with rotating basket 350 kg (PK 350-D)	24,7 / 38,6
with rotating basket 600 kg (PK 600-D)	21,2 / 36,5
Drive	PTO / 400 V hybrid





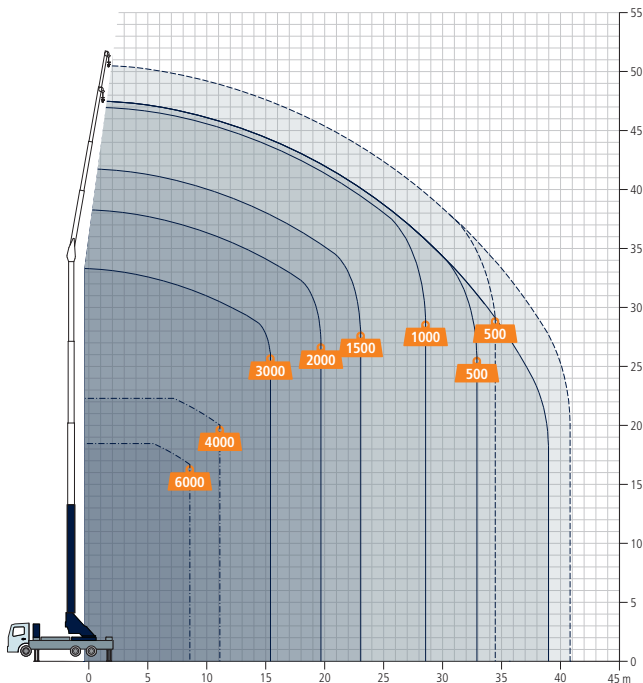
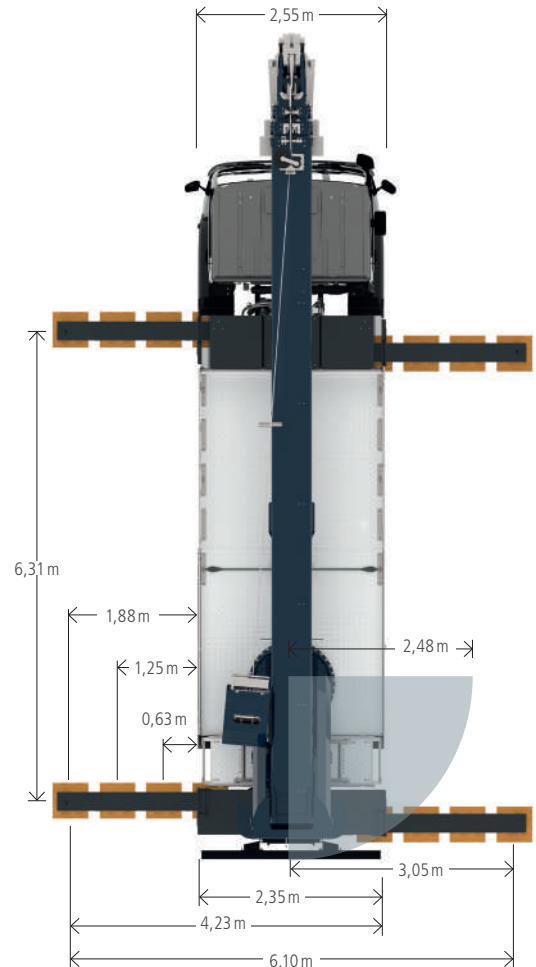
# AK 48

Technical Information



## Technical Data

Permissible gross vehicle weight [t]	26 (27)
Max. payload [kg]	3.000 (opt. 6.000)
Max. extension length [m]	49 (opt. 52)
Working height up to jib [m]	34,7
Jib extendable [m]	6,3 - 14,4 (opt. 17,4)
Jib payload [kg]	3.000 - 1.000 (500)
Boom angle [degrees]	90
Jib angle [degrees]	180
Pivoting range [degrees]	endless
Hook speed [m/min]	60
Range / Working height max. [m]	
with non-rotating basket 250 kg	33,5 / 49,5
with rotating basket 350 kg (PK 350-D)	28,5 / 45,7
with rotating basket 600 kg (PK 600-D)	25,1 / 43,6
Drive	PTO, 400 V hybrid, PTO + battery with 230 / 400 V Charger



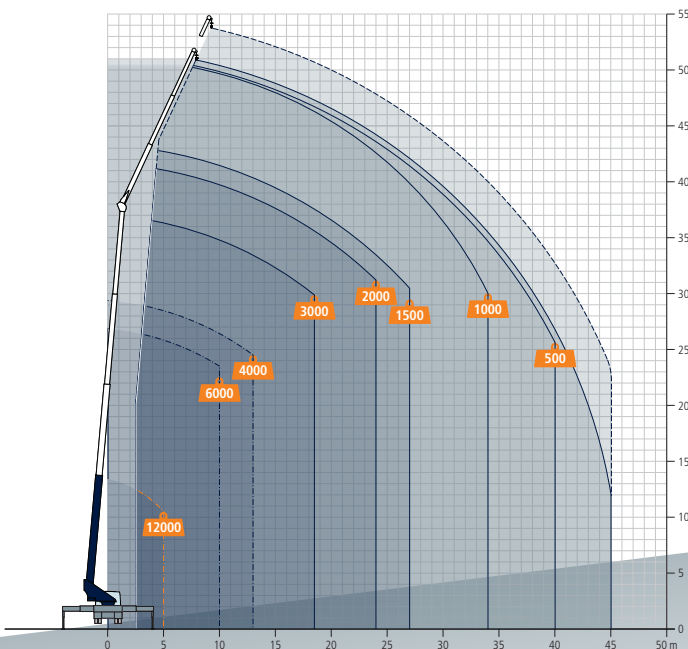
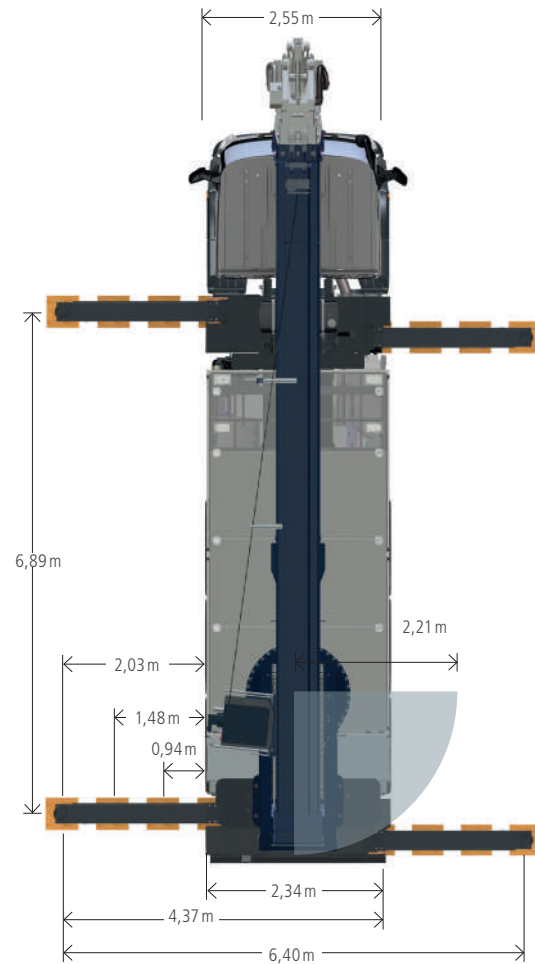
# AK 52

Technical Information



## Technical Data

Permissible gross vehicle weight [t]	26 / 32
Max. payload [kg]	3.000 (opt. 6.000 / 12.000)
Max. extension length [m]	52 (opt. 55)
Working height up to jib [m]	38,0
Jib extendable [m]	6,3 - 14,3 (opt. 17,3)
Jib payload [kg]	3.000 - 1.000 (500)
Boom angle [degrees]	85
Jib angle [degrees]	157
Pivoting range [degrees]	endless
Hook speed [m/min]	55
Range / Working height max. [m] with rotating basket Korb 350 kg (PK 350-D)	33,0 / 51,0
with rotating basket 600 kg (PK 600-D)	30,0 / 51,0
Range / Working height max. [m] with non-rotating basket 250 kg	37,5 / 53,0
Drive	PTO



# TRAILER CRANES



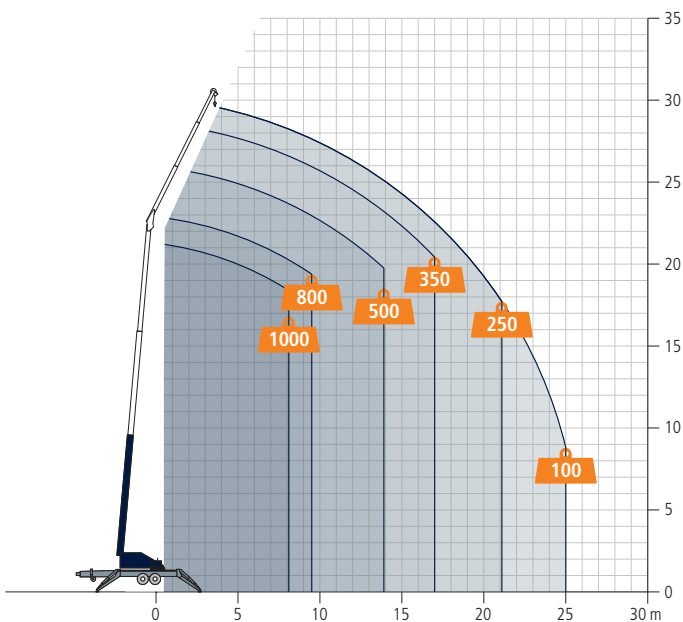
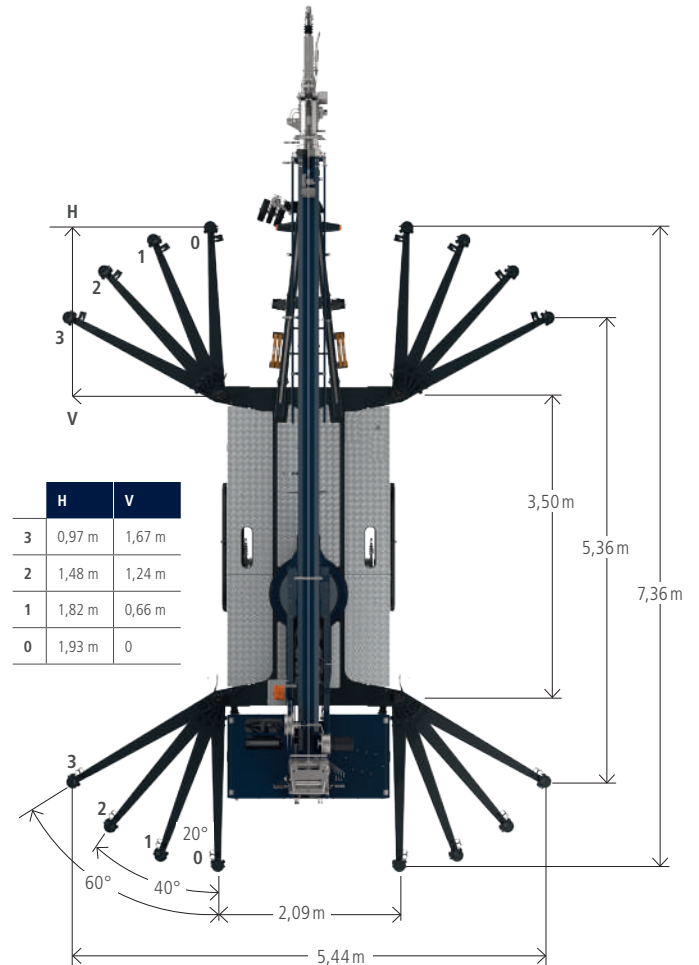
# AHK 30

Technical Information



## Technical Data

Towing capacity [kg]	3.500
Permissible gross vehicle weight [kg]	3.500
Max. payload [kg]	1.500
Max. extension length [m]	30,0
Working height up to jib [m]	22,4
Jib extendable [m]	4,8 / 7,4 / 9,1
Jib payload [kg]	1.500 / 350 / 250 (horizontal)
Boom angle [degrees]	85
Jib angle [degrees]	158
Pivoting range [degrees]	+/- 310
Hook speed [m/min]	50
Drive	Gasoline / Diesel



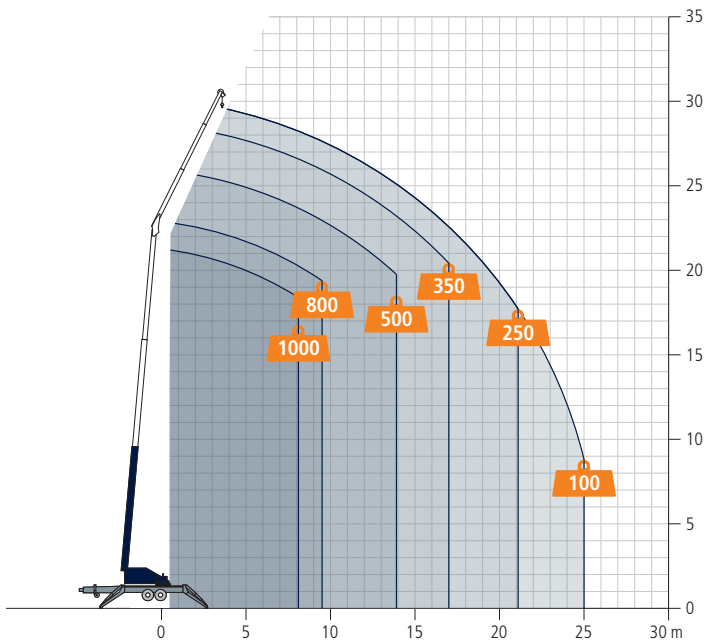
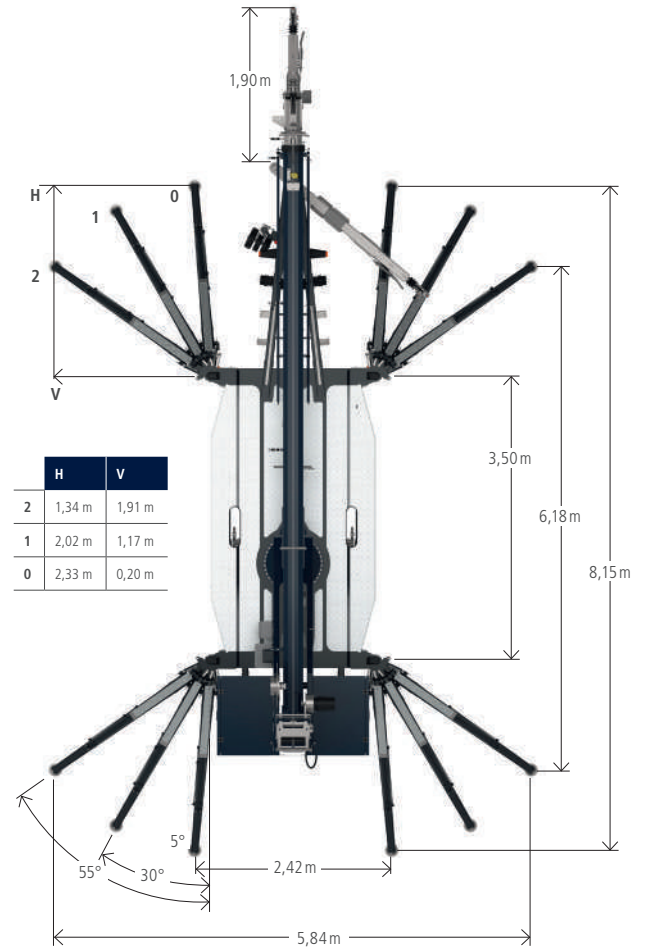
# AHK 30 KS

Technical Information



## Technical Data

Towing capacity [kg]	3.500
Permissible gross vehicle weight [kg]	3.650
Max. payload [kg]	1.500
Max. extension length [m]	30,0
Working height up to jib [m]	22,4
Ausleger ausziehbar [m]	4,8 / 7,4 / 9,1
Jib payload [kg]	1.500 / 350 / 250
Boom angle [degrees]	85
Jib angle [degrees]	158
Pivoting range [degrees]	endless
Hook speed [m/min]	50
Drive AHK 30 KS	Gasoline / Diesel /
Drive AHK 30e KS	230 V hybrid with battery 230 V with battery



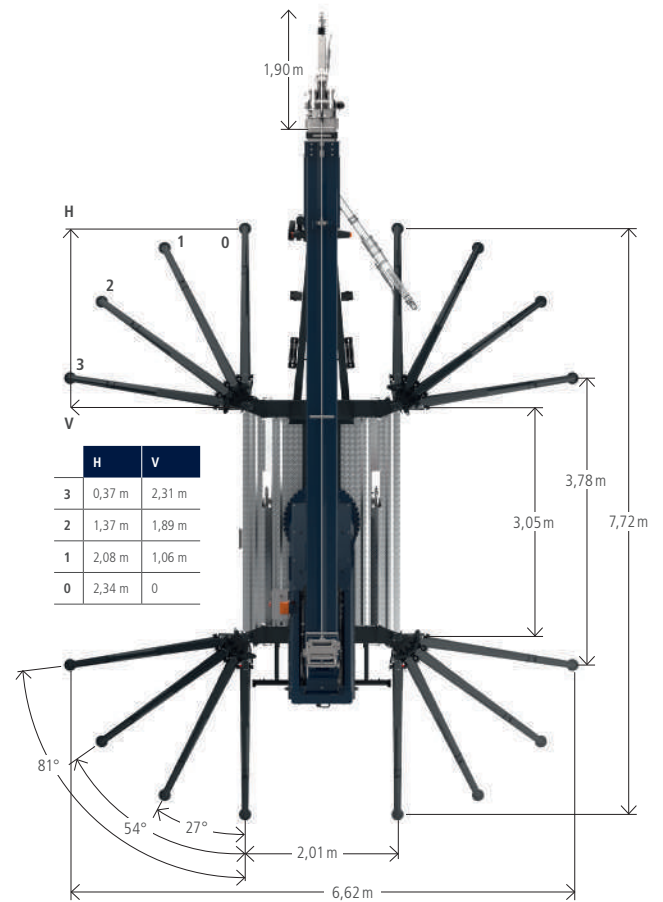
# AHK 36

Technical Information



## Technical Data

Towing capacity [kg]	3.500
Permissible gross vehicle weight [kg]	3.650
Max. payload [kg]	1.500 (opt. 2.400)
Max. extension length [m]	34,0 (opt. 36,0)
Working height up to jib [m]	22,7
Jib extendable [m]	4,9 / 8,0 / 11,1 (opt. 13,1)
Jib payload [kg]	2.400 / 1.500 / 800 / 500 / (250)
Boom angle [degrees]	85
Jib angle [degrees]	162
Pivoting range [degrees]	endless
Hook speed [m/min]	50
Range for platform operation at 250 kg [m]	15,8
Range for platform operation at 100 kg [m]	18,8
Working height in platform operation max. [m]	29,0
Drive	Gasoline / Diesel / 230 V hybrid with battery / 230 V with battery



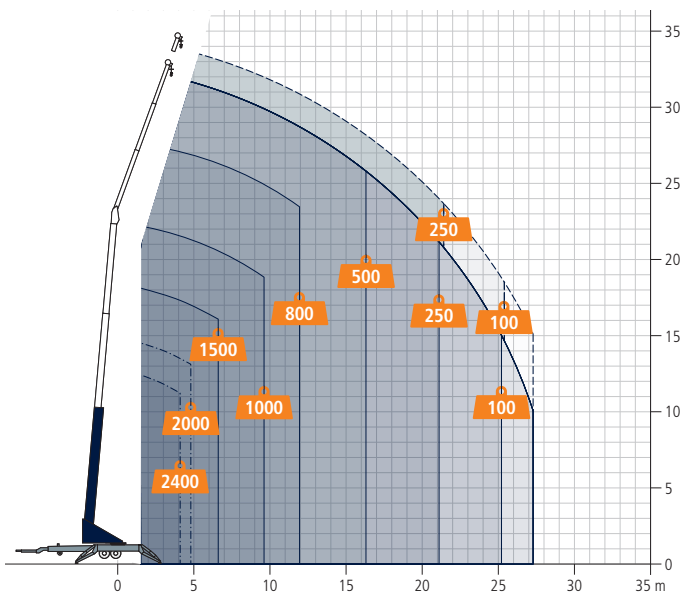
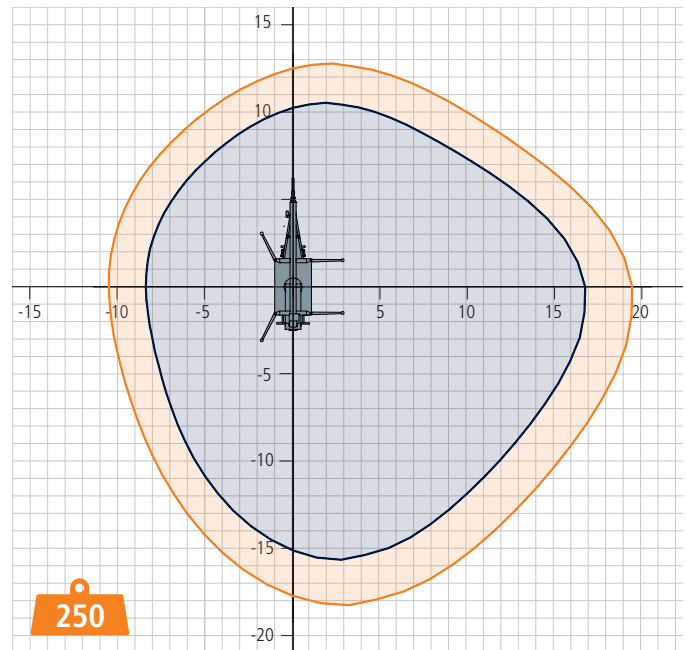
# AHK 36e X

Technical Information



## Technical Data

Towing capacity [kg]	3.500
Permissible gross vehicle weight [kg]	3.650
Max. payload [kg]	1.500 (opt. 2.400)
Max. extension length [m]	34,0 (opt. 36,0)
Working height up to jib [m]	22,7
Jib extendable [m]	4,9 / 8,0 / 11,1 (opt. 13,1)
Jib payload [kg]	1.500 / 800 / 500 / (250)
Boom angle [degrees]	85
Jib angle [degrees]	162
Pivoting range [degrees]	endless
Hook speed [m/min]	100
Range for platform operation at 250 kg [m]	15,7
Range for platform operation at 100 kg [m]	18,4
Working height in platform operation max. [m]	32,2
Drive	Gasoline / 230 V with battery





# Access platforms

Crane technology by Böcker goes a long way, using the matching Böcker accessories brings you even further! Already for decades, we have been in intensive exchange with our customers to be able to adapt our cranes to the specific needs of the individual trades.

And this is why we offer access platforms as well as for every trade and industry the matching crane accessories in different sizes: Roof tile grippers, tile distributors, tipper baskets and pallet forks, tool boxes, additional lighting and much more.

## Overview of the benefits

- Multiple applications thanks to the large number of accessories on offer for every trade.
- Still exceptional payloads and reaches thanks to the consequent aluminium light-weight construction



## Technische Daten

## PK 250-1

Max. payload [kg]	250
Number of persons max.	2
Power supply in basket [V]	110 / 230 (External supply line)
Rotation angle [Degree]	-
Extension width [m]	-
<b>Suitable crane models</b>	
AK 37	
AK 36	■
AK 42	■
AK 46	■
AK 48	■
AK 52	■
AHK 36	



### PK 250-D

250
2
110 / 230 (External supply line)
+/- 30
-
■
■
■
■
■
■
■

### PK 350-D

300
3
110* / 230* / 400*
+/- 75
-
■
■
■
■
■
■
■

### PK 350-DO

350
3
110* / 230* / 400*
+/- 220 (AK 42, 48, 52) +/- 90 (AK 46)
-
■
■
■
■
■
■
■

### PK 600-D

600
5
110* / 230* / 400*
+/- 220
0,50 (left and right)
■
■
■
■
■
■
■

All rights reserved for changes.

\* autonomous power supply optionally available

# BöckerConnect

The digital portal provides you with online information about your fleet of machines and displays all relevant data of the connected cranes at a glance. After logging in personally, you receive an overview of the current status and location of your cranes. In addition, statistics on usage behavior can be accessed.

In addition to the visualization and analysis of device data, the portal informs you about upcoming inspection dates. Technical documents and the contact details of your direct contacts are also stored centrally. On the online platform, you can view the current position of your cranes at any time and receive a configurable theft alert as soon as they leave a predefined operating radius. Furthermore, thanks to GPS-based positioning, it is possible to track the cranes' travel routes.

For data collection, the connected cranes are equipped with an integrated remote maintenance module that transmits information via the mobile network to a central cloud. The continuously transmitted diagnostic data and sensor values, as well as the service history stored in the portal, enable detailed remote maintenance and well-founded technical support from Böcker customer service. In addition, the module includes an error memory and a weather API.

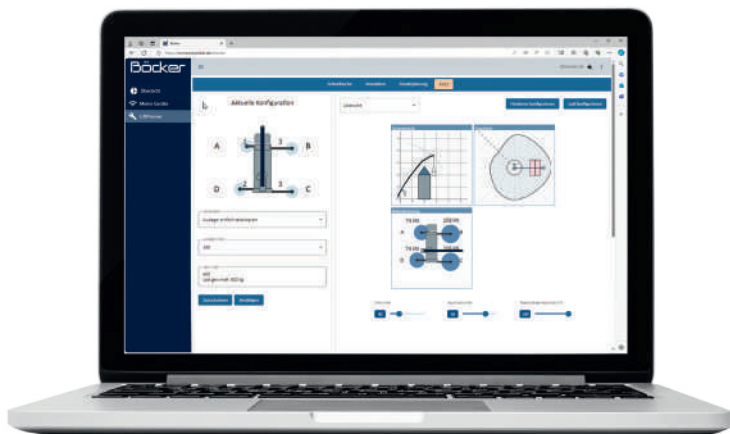
## LiftPlanner

With the optionally integrated Böcker LiftPlanner, you can quickly and easily configure individual planning data for your projects. The software simplifies the planning of crane operations by simulating lifting processes and the optimal crane configuration in advance. This allows the machine to be set up on-site in a reach-optimized and safe manner.

### Overview of the benefits

- Up-to-date overview of all machine data available via the customer portal
- GPS location tracking and theft alerts
- Diagnostic function for remote maintenance minimizes machine downtime
- Smart deployment planning and construction site simulation

## BöckerConnect



# AirScanner

With the Böcker AirScanner, craft businesses in Germany benefit from AI-supported drone surveying and precise 3D building data for their projects. This smart solution enables roofers and all other trades related to the building envelope (such as scaffolders, solar installers, etc.) to quickly, safely, and with maximum accuracy create comprehensive 3D measurements of buildings—directly from drone images and with automated AI analysis. The platform delivers centimeter-accurate measurements of roofs and façades, which can be seamlessly integrated into planning, costing, and quotation processes.

Böcker offers its customers exclusive, optimized packages in cooperation with Airteam, the leading provider of building surveying. These packages combine drone starter kits, access to the Airteam Fusion platform, and accompanying services at attractive conditions, enabling an easy entry into digital surveying. As a result, owners of Böcker cranes and lifts benefit from significantly more efficient workflows, greater planning reliability, and a modern service offering for their projects.



## Overview of the benefits

- Standardized measurements
- 90% faster than manual measurement
- Centimeter-accurate surveying
- Complies with German construction requirements and standards
- Transparency and traceability for customers and employees
- Process optimization through compatibility with industry software



# Crane Accessories



Handover Remote Control



Rear View and H-Outrigger Cameras



Anemometer



Hook Camera



Aircraft Warning Lights



LED Rotating Beacon



Fixed Hook



LED Rotating Beacon



LED Worklight

# Roof Tile Tongs



## Aluminium Roof Tile Tong DZZ 3-600

- For 1, 2 or 3 rows of vertical concrete roof tiles or 2 rows horizontal clay tiles
- Adaptation to package widths by means of marking out
- Including safety guard and automatic changing function

Load capacity	600 kg
Net weight	80 kg
Opening width approx.	300 - 1,200 mm
Depth of immersion	200 mm
Cheek length	1,200 mm



## Aluminium Roof Tile Tong DZZ 2-400

- For 1 or 2 rows of concrete roof tiles, loose, bandaged or wrapped in shrinking foil
- Including swivelling safety basket and automatic changing function

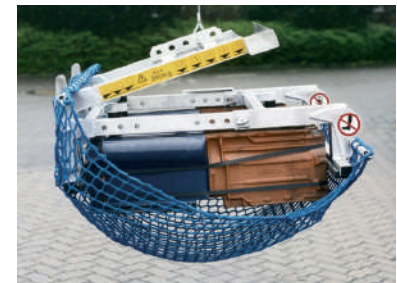
Load capacity	400 kg
Net weight	82 kg
Opening width approx.	150 - 900 mm
Depth of immersion	130 mm
Cheek length	1,200 mm



## Aluminium Roof Tile Tong DZZ 1-200

- For 1 row of concrete roof tiles and clay tiles, loose, bandaged or wrapped in shrinking foil
- Including swivelling safety basket and automatic changing function

Load capacity	200 kg
Net weight	56 kg
Opening width approx.	240 - 500 mm
Depth of immersion	100 mm
Cheek length	1,200 mm



## Aluminium Multipurpose Tong MZZ 2-360

- Suitable for loose clay tiles, bandaged or wrapped in shrinking foil
- Including safety net

Load capacity	360 kg
Net weight	45 kg
Opening width approx.	410 - 1,070 mm
Depth of immersion	175 mm
Cheek length	1,200 mm

# Platforms and Roof Stands



Load capacity	400 kg*
Net weight	39 kg
Transport width	1,350 mm
Transport length	1,450 mm
Transport height	210 mm
Loading area size	1,290 x 850 mm
Roof inclination	up to 50 degrees

\*two rows of roof tiles



Aluminium Roof Tile  
Platform DZV 200  
for cranes

Load capacity	200 kg*
Net weight	22 kg
Transport width	950 mm
Transport length	1,350 mm
Transport height	210 mm
Loading area size	1,290 x 415 mm
Roof inclination	up to 50 degrees

\*one row of roof tiles



Aluminium Roof Tile  
Platform DZV 200-F  
for lifts

- Particularly space-saving transport

Load capacity	200 kg
Net weight	14 kg
Transport width	460 mm
Transport length	1,470 mm
Transport height	340 mm
Loading area size	1,100 x 450 mm
Roof inclination	up to 50 degrees



## Rolling Platform

- Particularly space-saving transport
- 8-fold adjustment for adaptation to roof inclination
- Special profile rubber rollers
- Including safety hook

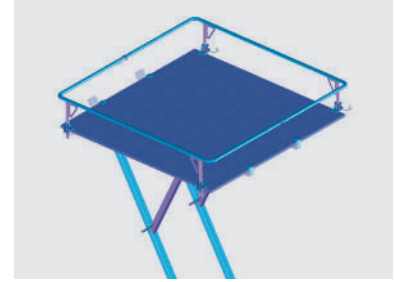
Load capacity	200 kg
Net weight	16 kg per pair
Width	420 mm



## Roof Stand DS 680 A

- Mounting on the rafters
- Particularly easy to mount
- Particularly space-saving transport

Load capacity	600 kg
Net weight	6.3 kg
Width of load (max.)	800 mm
Roof inclination	20 - 60 degrees



## Roof Stand DS 600 A

- Including crane eyes
- Loading area with plug-in guards
- Mounting on the rafters

Load capacity	600 kg
Net weight	65 kg
Loading area	1,700 x 1,700 mm
Roof inclination	20 - 60 degrees



## Aluminium Man Basket KS 200

- Including telescoping facade running wheels

Load capacity crane	min. 410 kg
Net weight	67 kg
Load capacity	200 kg, 2 persons
Length exterior dimensions	1,600 mm
Width exterior dimensions	1,080 mm
Height exterior dimensions	2,315 mm



## Warning Sign

- Protection of the construction site as a warning sign
- Stable galvanised design

Net weight	11.5 kg
Width	550 mm
Height	1,000 mm
Erection depth	600 mm
Own advertising	up to 400 x 500 mm

# Pallet Forks and Tipper Baskets



## Aluminium Pallet Fork PG 1000 A

- Balancing the centre of gravity by adjusting the eye hook of the crane
- Including safety chain

Load capacity	1,000 kg
Net weight	66 kg
Height	1,850 mm
Prong length	1,109 mm
Prong adjustment	440 - 910 mm



## Aluminium Pallet Fork PG 1800 A

- Balancing the centre of gravity by adjusting the eye hook of the crane
- Including safety chain

Load capacity	1,800 kg
Net weight	80 kg
Height	1,998 mm
Prong length	1,000 mm
Prong adjustment	350 - 935 mm



## Aluminium Pallet Fork PG-A-1800 A

- Balancing the centre of gravity automatically by means of pressure springs
- Including safety chain

Load capacity	1,800 kg
Net weight	80 kg
Height	1,980 mm
Prong length	1,000 mm
Prong adjustment	350 - 935 mm



## Aluminium Long Goods Fork LG 3000

- Balancing the centre of gravity automatically by means of pressure springs
- Including safety chain

Load capacity	200 kg
Net weight	25 kg
Fork height	758 mm
Fork width	590 mm
Length	3,000 mm



## Aluminium Tipper Basket KM 500/315

- Tilting function by means of automatic swivel shackles

Load capacity	500 kg
Net weight	45 kg
Volumetric capacity	315 l
Trough width	890 mm
Trough length	1,253 mm
Trough height	523 mm



## Aluminium Tipper Basket KM 1000/625

- Tilting function by means of automatic swivel shackles

Load capacity	1,000 kg
Net weight	70.5 kg
Volumetric capacity	625 l
Trough width	1,000 mm
Trough length	1,460 mm
Trough height	623 mm



## Aluminium Tipper Basket KM 1000/1000

- Tilting function by means of automatic swivel shackles

Load capacity	1,000 kg
Net weight	90 kg
Volumetric capacity	1,000 l
Trough width	1,200 mm
Trough length	1,386 mm
Trough height	747 mm



## Aluminium Basket 800

- Baskets stackable

Load capacity	230 kg
Net weight	12 kg
Basket width	800 mm
Basket width with stacking lugs	911 mm
Basket length	800 mm
Trough height	300 mm

# CONSTRUCTION LIFTS



# TOP-LIFT



Technical Information



## Technical Data

Model	Top-Lift Standard	Top-Lift HighSpeed
Payload [kg]	250	230
Lifting speed [m/min]	34	20/40
Lifting height max. [m]	20,30	20,30
Rope length [m]	44	44
Rope diameter [mm]	6	6
Voltage [V/Hz]	230/50	230/50
Control voltage [V]	24	24
Weight of drive unit [kg]	54	54

All rights reserved for changes.



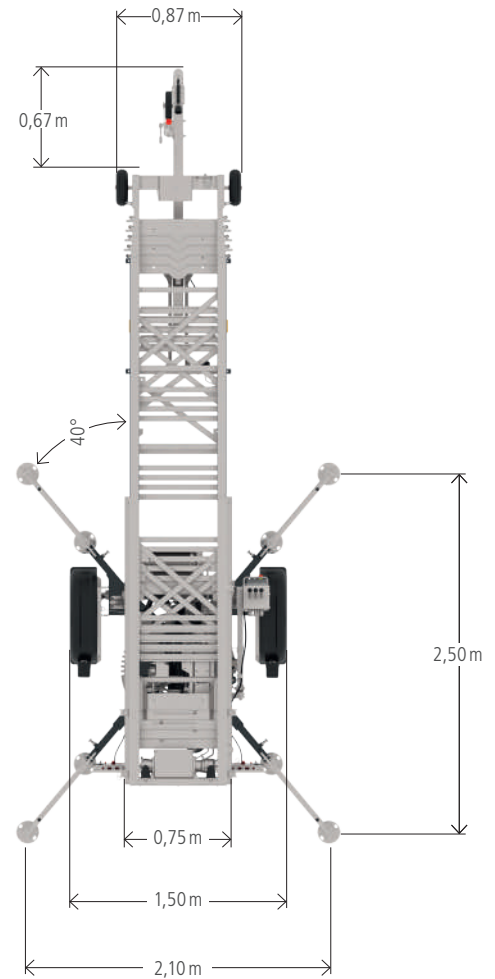
# JUNIOR 18

Technical Information



## Technical Data

Payload [kg]	250
Permissible axle load [kg]	750
Gross vehicle weight [kg]	825
Permissible drawbar load [kg]	75
Extendable up to [m]	18,2
Package length [mm]	4.085
Lift length [mm]	4.950
Lift width [mm]	1.500
Track width [mm]	540
Driver's license class	B / B96 / BE
Drive	230 V Electric Motor / Gasoline



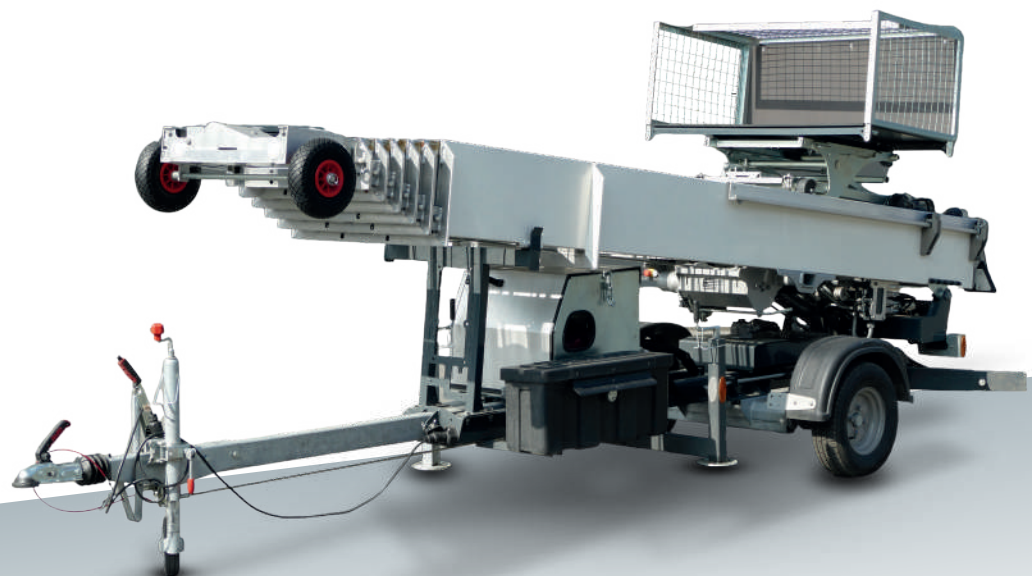
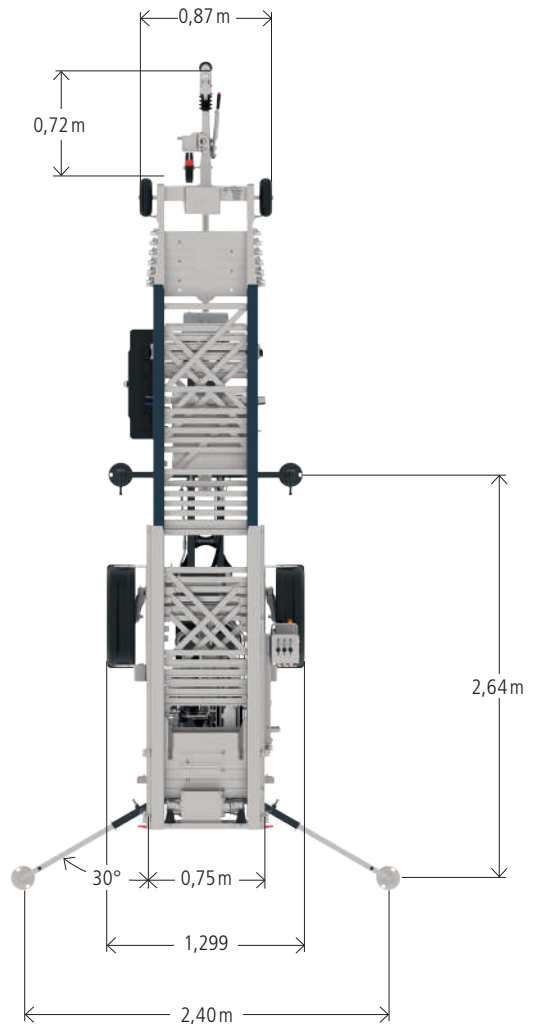
# JUNIOR 21

Technical Information



## Technical Data

Payload [kg]	250
Trailer load [kg]	1.000
Permissible total weight [kg]	1.100
Permissible drawbar load [kg]	100
Extendable up to [m]	20,9
Package length [mm]	4.240
Maximum slide speed [m/min]	24 / 48
Lift length [mm]	5020
Lift width [mm]	1.299
Track width [mm]	540
Driver's license class	B / B96 / BE
Drive	Electric motor / Gasoline



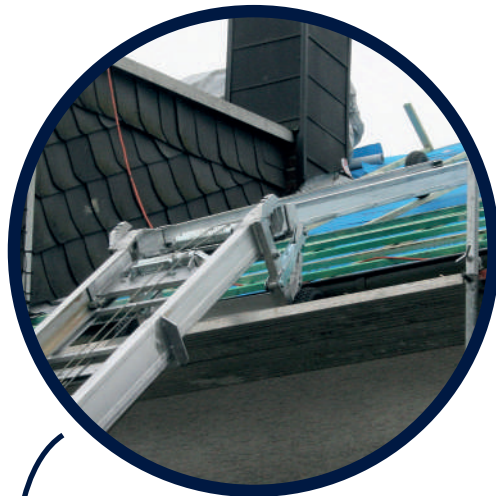
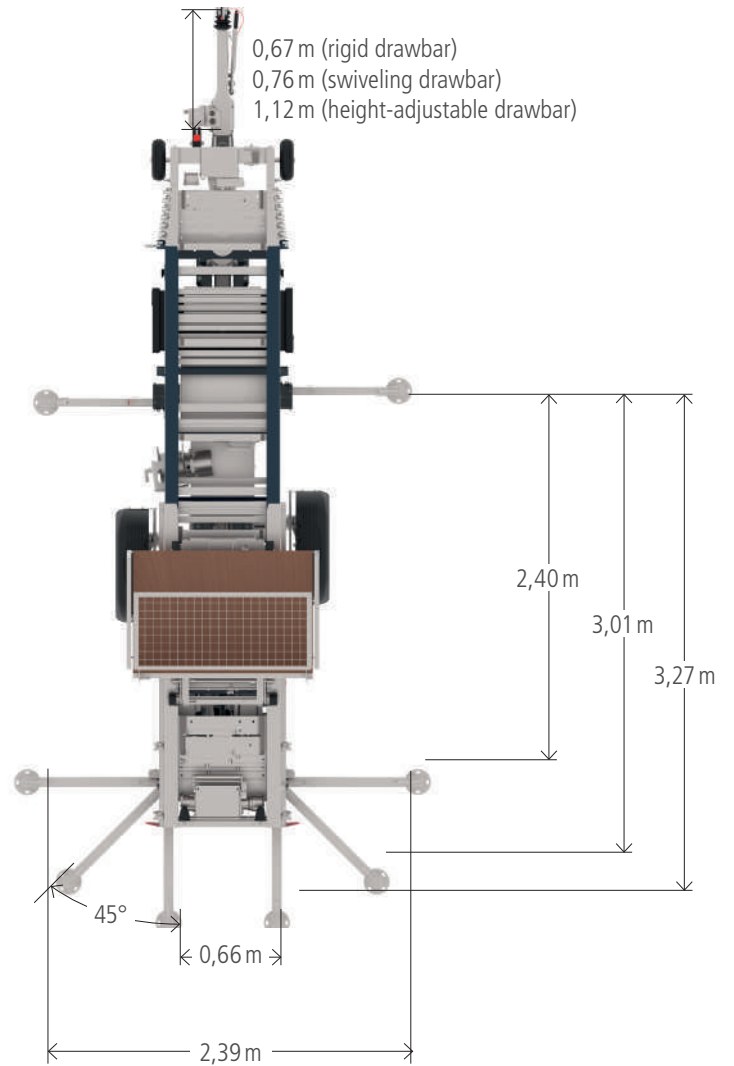
# JUNIOR 24

Technical Information

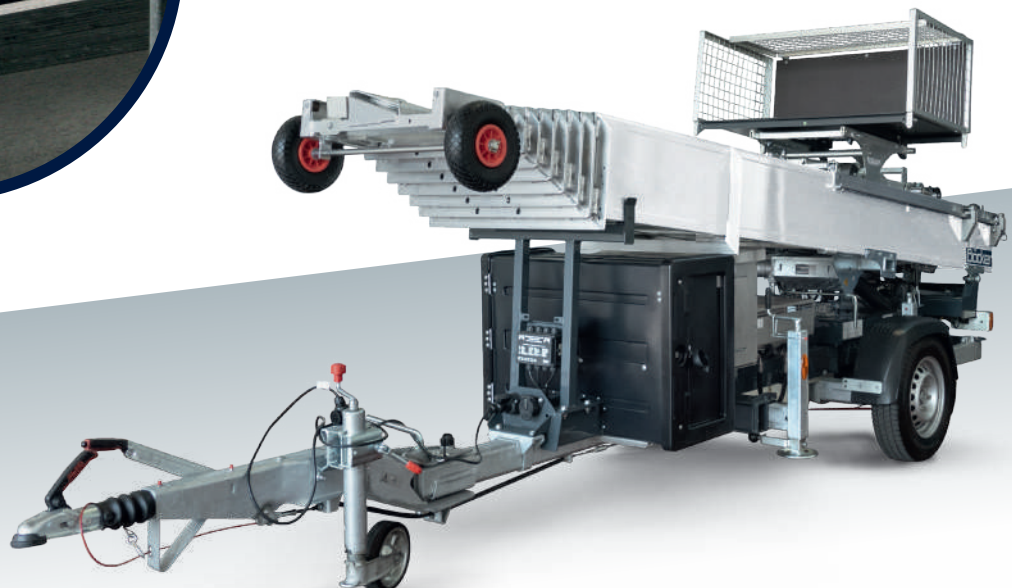


## Technical Data

Payload [kg]	250
Trailer load [kg]	1.300
Permissible total weight [kg]	1.400
Permissible drawbar load [kg]	100
Shunting motor	optional
Extendable up to [m]	23,7
Package length [mm]	4.000
Package length [mm]	48
Lift length [mm]	5.120
Lift width [mm]	1.299
Track width [mm]	540
Driver's license class	B / B96 / BE
Drive	Gasoline / Electric motor / Dual drive (switchable I+ Electric) / battery



optionally with integrated knee joint



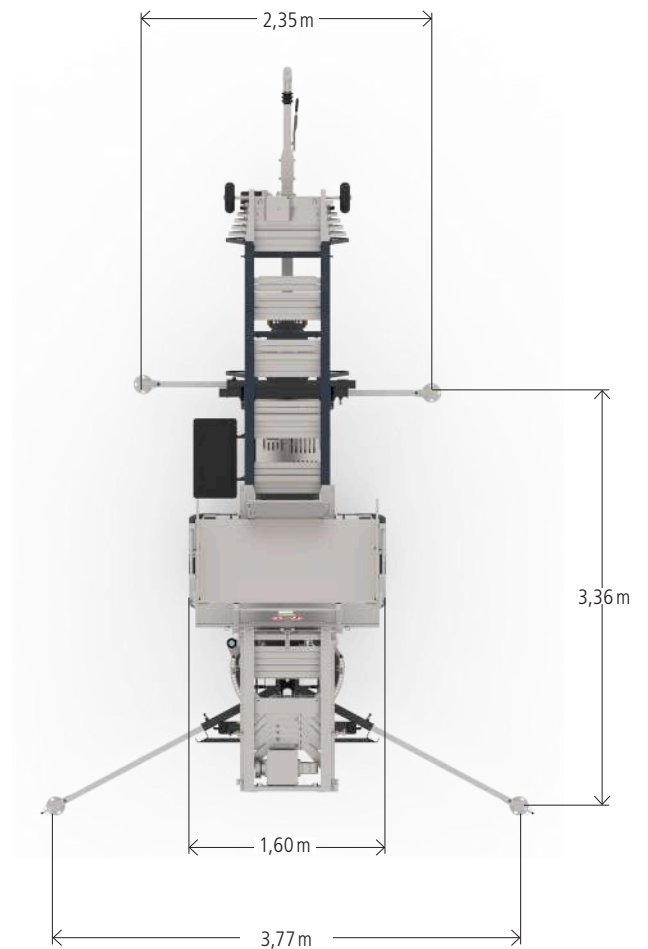
# AVARIO K

Technical Information

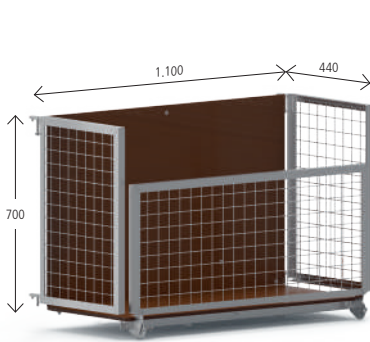


## Technical Data

Payload [kg]	270
Towing capacity [kg]	1.800
Permissible total weight [kg]	1.900
Eaves height when bent [m]	20,3
Length on the roof [m]	6,8
Driver's license class	B96 / BE
Average carriage speed [m/min]	50
Lift length [mm]	5.800
Lift width [mm]	1.599
Package length [mm]	4.850
Track width [mm]	540
Extendable from - to [m]	5,0 - 27,0
Drive	Gasoline / additional electric motor optional



# Accessories



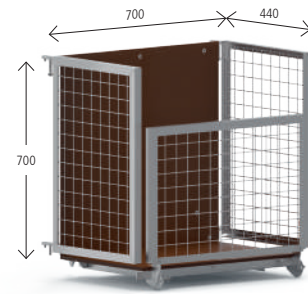
Universal platform 1.100

---



Window platform\*

---



Universal platform 700

---



Solar platform

---



Knee joint\*\*

---



Extension\*\* 1 oder 2 m

---



Combined bucket

---

\* Must be dismantled for road transportation!

\*\* Can only be combined with the construction version.

# FURNITURE LIFTS



# TOP-LIFT

Technical Information



## Technical Data

Model	Top-Lift MV
Payload [kg]	230
Lifting speed [m/min]	20/40
Lifting height max. [m]	20,30
Rope length [m]	44
Rope diameter [mm]	6
Voltage [V/Hz]	230/50
Control voltage [V]	24
Weight of drive unit [kg]	54



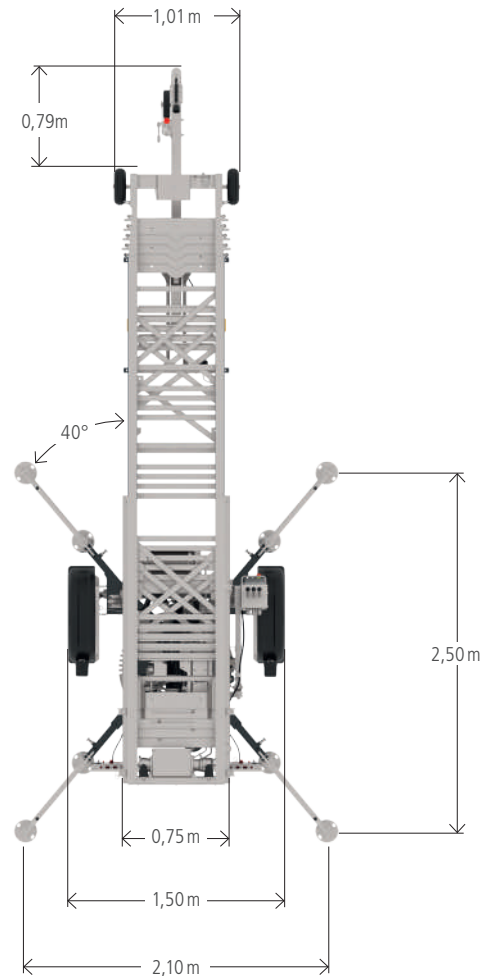
# JUNIOR 18

Technical Information



## Technical Data

Payload [kg]	250
Permissible axle load [kg]	750
Gross vehicle weight [kg]	825
Permissible drawbar load [kg]	75
Extendable up to [m]	18,2
Package length [mm]	4.085
Lift length [mm]	4.950
Lift width [mm]	1.500
Track width [mm]	540
Driver's license class	B / B96 / BE
Drive	230 V Electric motor / Gasoline



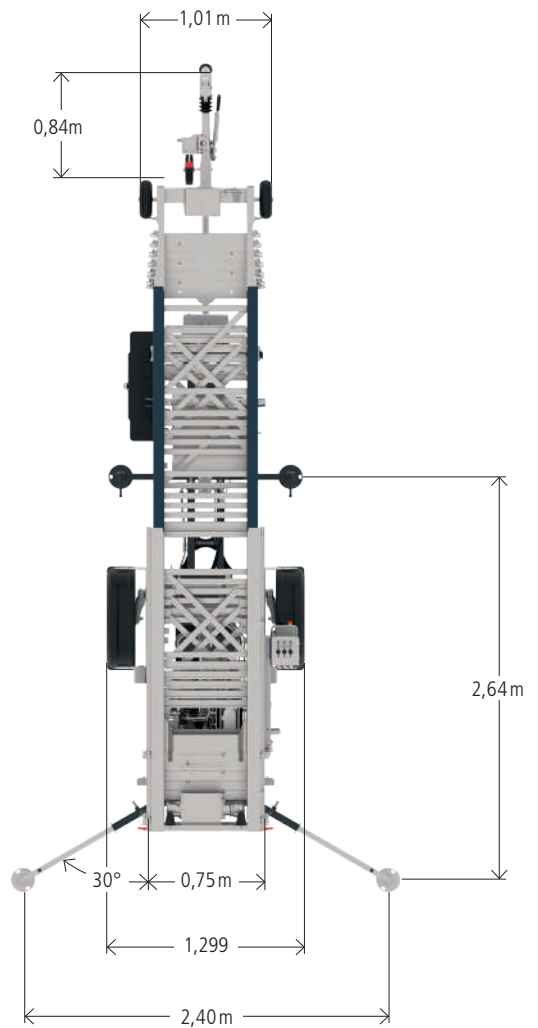
# JUNIOR 21

Technical Information



## Technical Data

Payload [kg]	250
Trailer load [kg]	1.000
Permissible total weight [kg]	1.100
Permissible drawbar load [kg]	100
Extendable up to [m]	20,9
Package length [mm]	4.240
Maximum slide speed [m/min]	24 / 48
Lift length [mm]	5020
Lift width [mm]	1.299
Track width [mm]	540
Driver's license class	B / B96 / BE
Drive	Gasoline / Electric motor



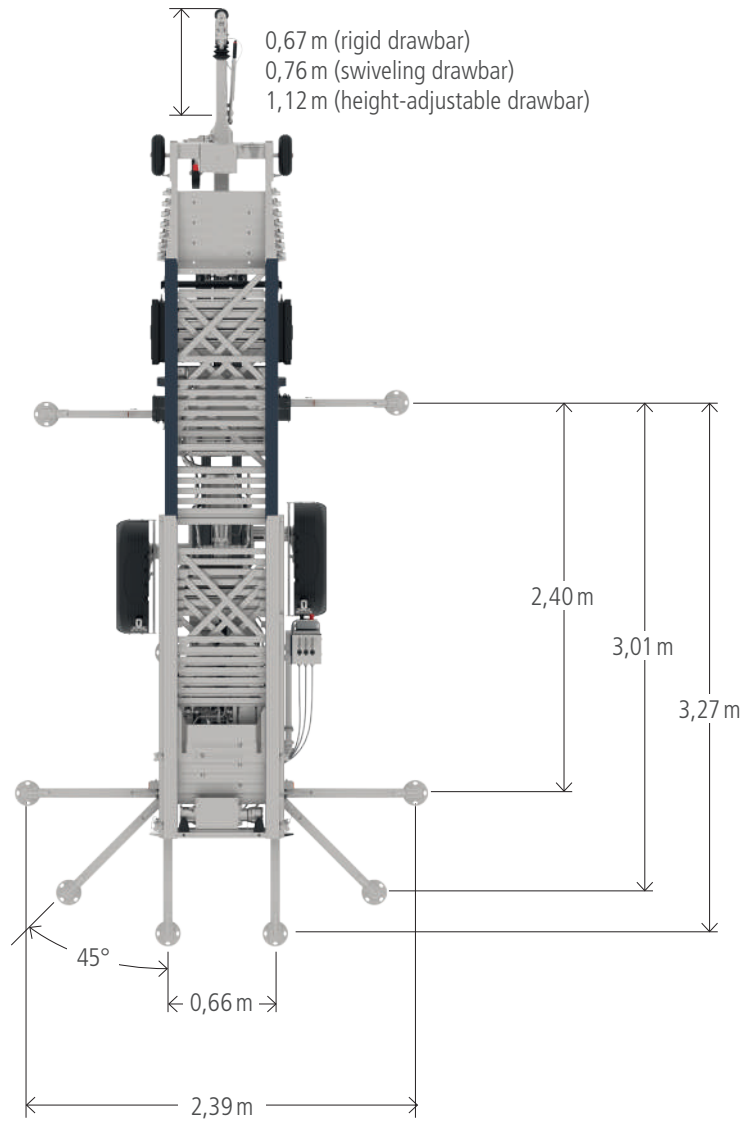
# JUNIOR 24

Technical Information

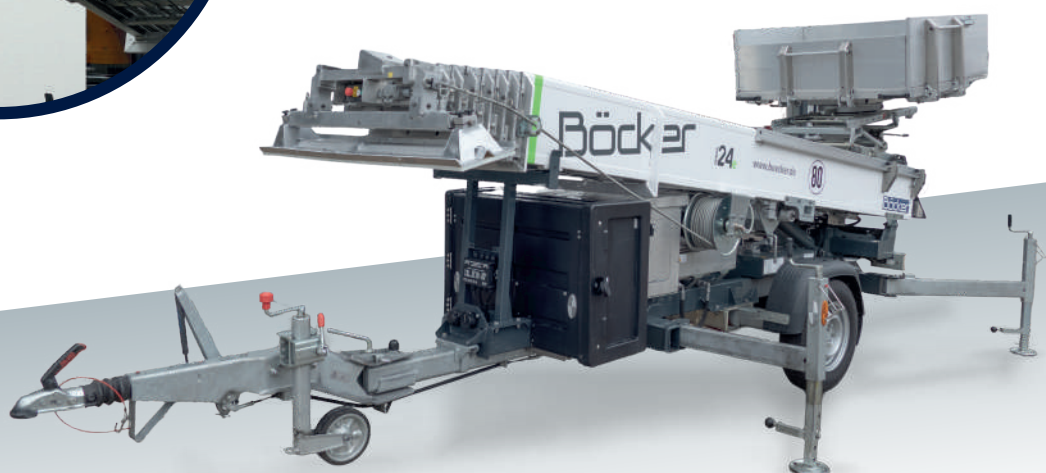


## Technical Data

Payload [kg]	250
Permissible axle load [kg]	1.300
Permissible total weight [kg]	1.400
Permissible drawbar load [kg]	100
Extendable from - to [m]	4,1 - 23,7
Package length [mm]	4.000
Maximum slide speed [m/min]	48
Lift length [mm]	5.120
Lift width [mm]	1.299
Track width [mm]	540
Driver's license class	B / B96 / BE
Drive	Gasoline / Electric motor / Dual drive (switchable Gasoline+ Electric) / battery



facade protection panel



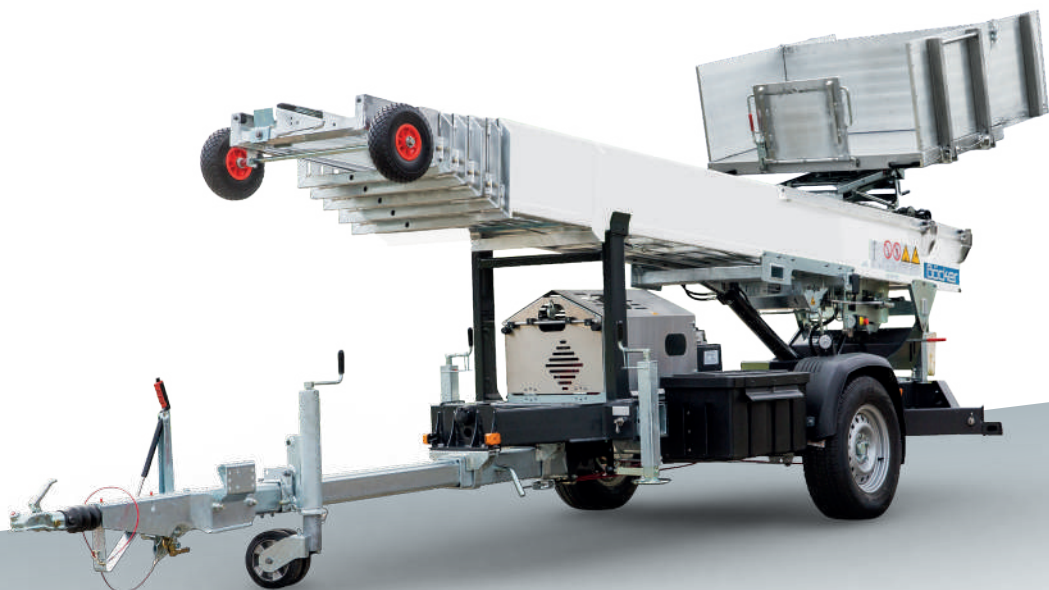
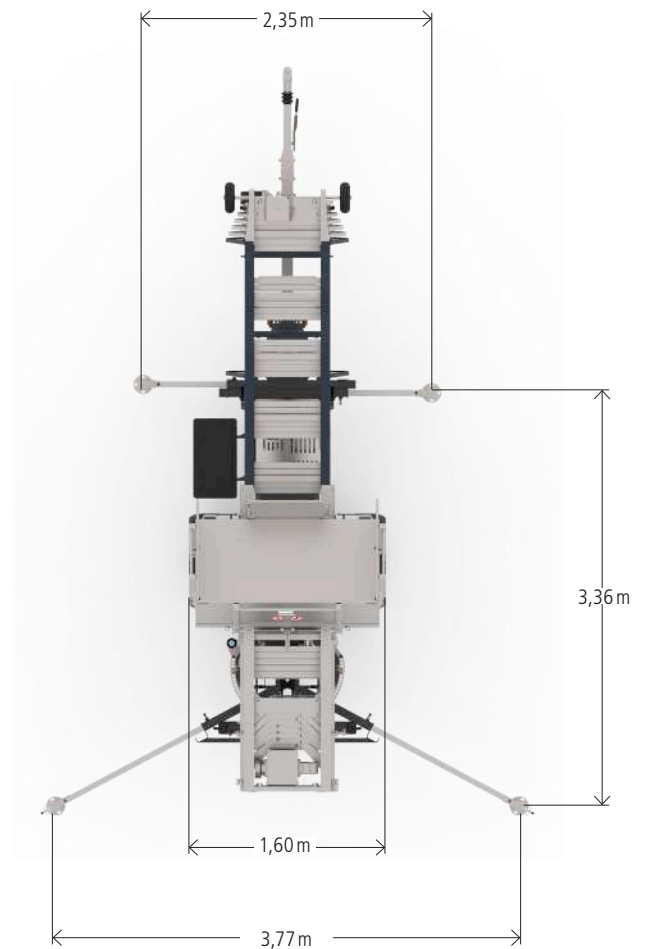
# AVARIO

Technical Information



## Technical Data

Trailer load [kg]	1.800
Permissible total weight [kg]	1.900
Permissible drawbar load [kg]	100
Driver's license class	B96 / BE
Average carriage speed [m/min]	50
Lift length [mm]	5.800
Lift width [mm]	1.599
Paketlänge [mm]	4.850
Track width [mm]	540
Extendable up to [m]	25,6
Drive	Gasoline / additional electric motor optional



# ARRIVA

Technical Information



## Technical Data

Modell	Arriva 26	Arriva 30	Arriva 34	Arriva 37
Maximum payload standard / maxi [kg]	400	400	400	400
Permissible total weight [kg]	1.800 <sup>1)</sup>	1.800 <sup>1)</sup>	2.240 <sup>1)</sup>	2.300
Permissible trailer load [kg]	1.700 <sup>1)</sup>	1.700 <sup>1)</sup>	2.140 <sup>1)</sup>	2.200
Driver's license class	B96 / BE	B96 / BE	B96 / BE	B96 / BE
Average slide speed [m/min]	45	45	45	45
Lift length [mm]	7.150	7.200	7.250	8.550
Lift width [mm]	1.650	1.650	1.760	1.760 <sup>1)</sup>
Package length [mm]	5.360	5.415	5.470	6.810
Track width [mm]	540	540	540	540
Extendable up to [m]	25,76	29,77	33,10	36,48
Drive	Gasoline / Diesel additional electric motor	Gasoline / Diesel additional electric motor	Gasoline / Diesel additional electric motor	Gasoline / Diesel additional electric motor



All rights reserved for changes. All specified values are maximum values.  
 \* depending on equipment and country, <sup>1)</sup> 2.300 kg with maneuvering drive

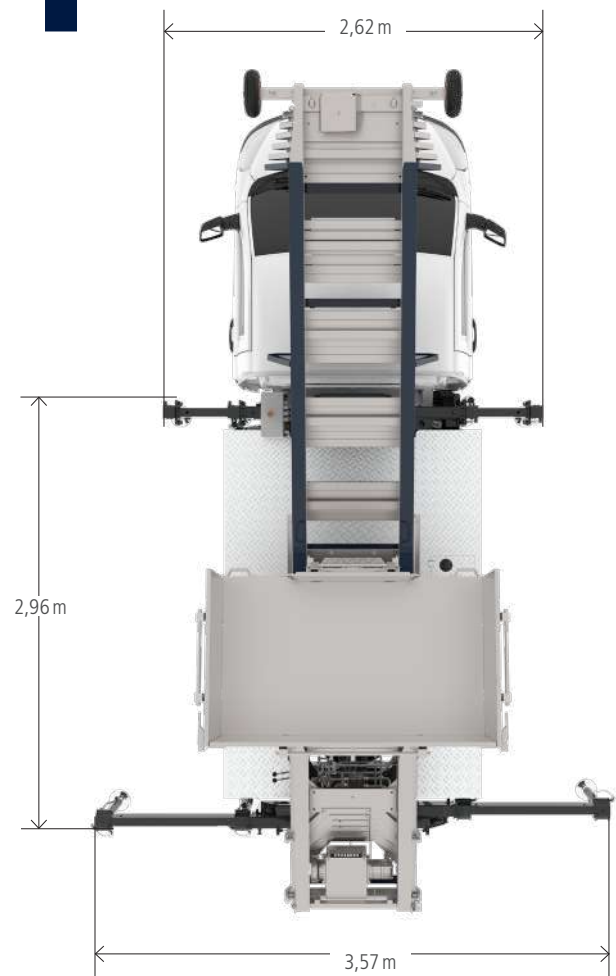
# AGILO COMPACT

Technical Information



## Technical Data

Extension length [m]	25,8
Payload [kg]	400
Package length [m]	4,9
Permissible total weight [t]	2,8
Driver's license class	B
Total length [m]	5,30
Overall width [m]	1,78
Clearance height [m] (without platform)	2,70
Clearance height [m] (with platform)	3,20
Carriage speed [m/min]	42
Permissible angle of elevation [degrees]	20° - 88°



# AGILO



Technical Information



## Technical Data

Model on Iveco	Agilo 27/27e	Agilo 30/30e	Agilo 34
Extension length [m]	26,6	30,2	33,6
Payload [kg]	400	400	400
Package length [m]	5.360	5.415	5.570
Permissible total weight [t]	3,5	3,5	> 3,5
Drivers license class	B	B	B
Total length [m]	ca. 6,2	ca. 6,2	ca. 6,2
Overall width [m]	ca. 2,0	ca. 2,0	ca. 2,0
Clearance height [m] (with platform) <sup>1</sup>	ca. 3,04	ca. 3,07	ca. 3,1
Carriage speed [m/min]	42	42	42
Permissible angle of elevation [degrees]	ca. 87°	ca. 87°	ca. 87°

<sup>1</sup> The platform height is lower than the height of the head section on the Iveco.



## Accessories



Furniture platform, **Basic**  
(multiple options possible)

---



Furniture platform, **Premium**  
(multiple options possible)

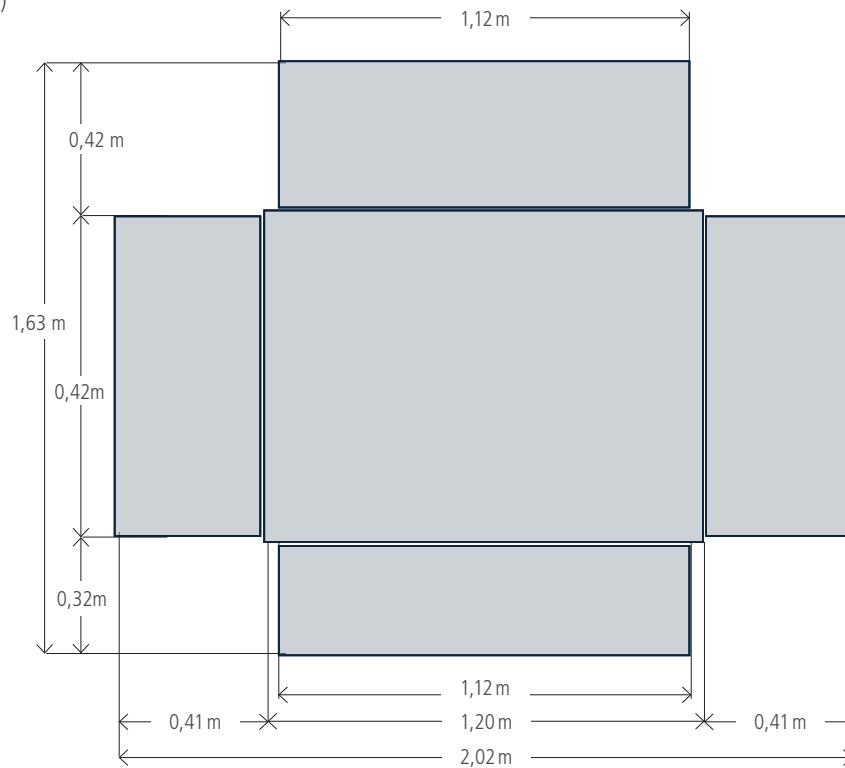
---



Furniture platform, **Maxi**  
(multiple options possible)

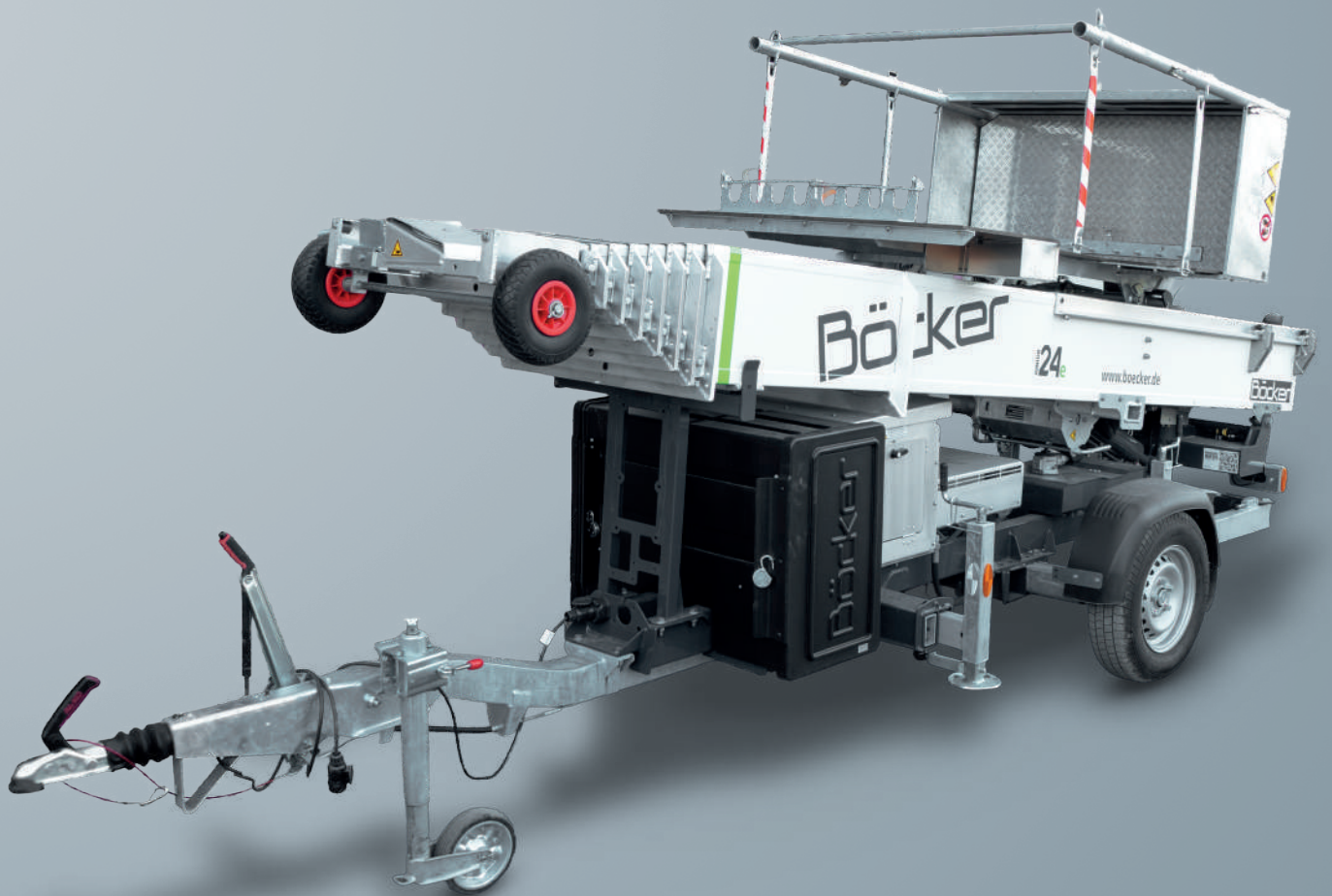
---

Furniture platform, **Basic**  
(multiple options possible)





# SCAFFOLDING LIFTS



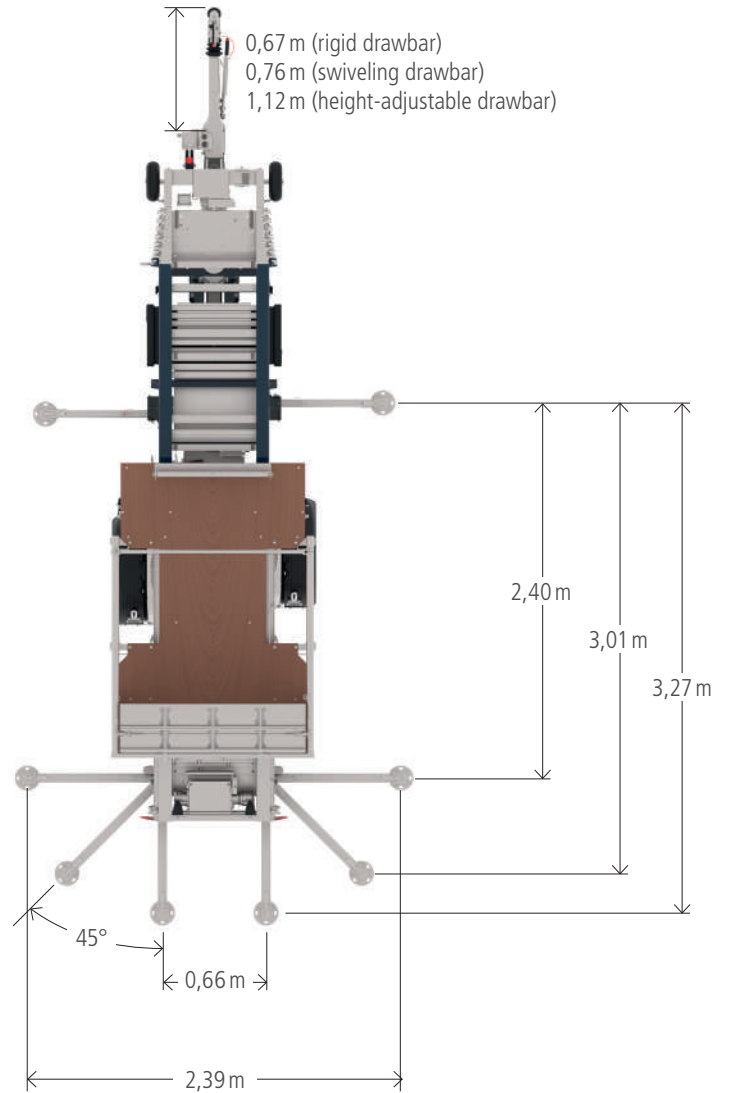
# JUNIOR G

Technical Information



## Technical Data

<b>Model</b>	<b>Junior 24</b>
Max. payload [kg]	250
Permissible total weight [kg]	1.400
Permissible axle load [kg]	1.300
Extendable up to [m]	23,7
Package length [mm]	4.000
Max. slide speed [m/min]	48
Lift length [mm]	5.120
Lift width [mm]	1.299
Track width [mm]	540
Driver's license class	B/B96/BE
Drive	Gasoline / Hybrid / Electric motor / Battery



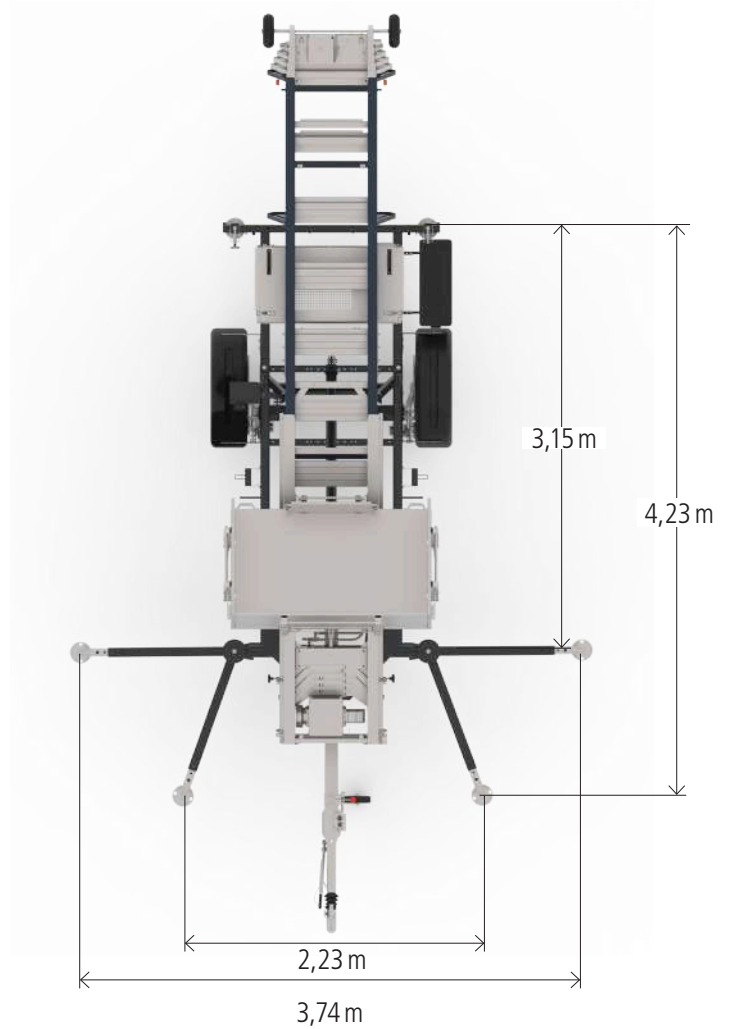
# ARRIVA G

Technical Information



## Technical Data

<b>Model</b>	<b>Arriva 37</b>
Permissible total weight [kg]	2.500
Driver's license class	B96 / BE
Average slide speed [m/min]	45
Lift length [mm]	8.550
Lift width [mm]	1.760
Package length [mm]	6.810
Track width [mm]	540
Extendable up to [m]	36,48
Drive	Gasoline / Diesel additional electric motor



# Böcker

**Böcker Maschinenwerke GmbH**

Lippestr. 69-73  
59368 Werne  
Fon +49 2389 79890  
info@boecker.de

[www.boecker.de](http://www.boecker.de)

International locations

